

Available to Promise

[BENEFITS]

Exceed customer expectations

Give customers firm promises for when a product is deliverable — and eliminate the risk of stock-outs — by calculating future availability dates based on existing commitments and quantities after satisfying commitments.

Take control of your inventory

Gain complete control over your inventory by knowing instantly how much of each product you have on hand, how much is committed, and how much is tied up unnecessarily in transactions that may never take place.

Give employees precise information

Make it easy for employees to work more productively with better access to vital information, such as accurate current and future inventory positions, and access to Available to Promise information from the Sales Order Processing window.

Get a complete view of your stock

Immediately see every unposted transaction for an individual product, whether real or simply anticipated.

Maximize your net profit

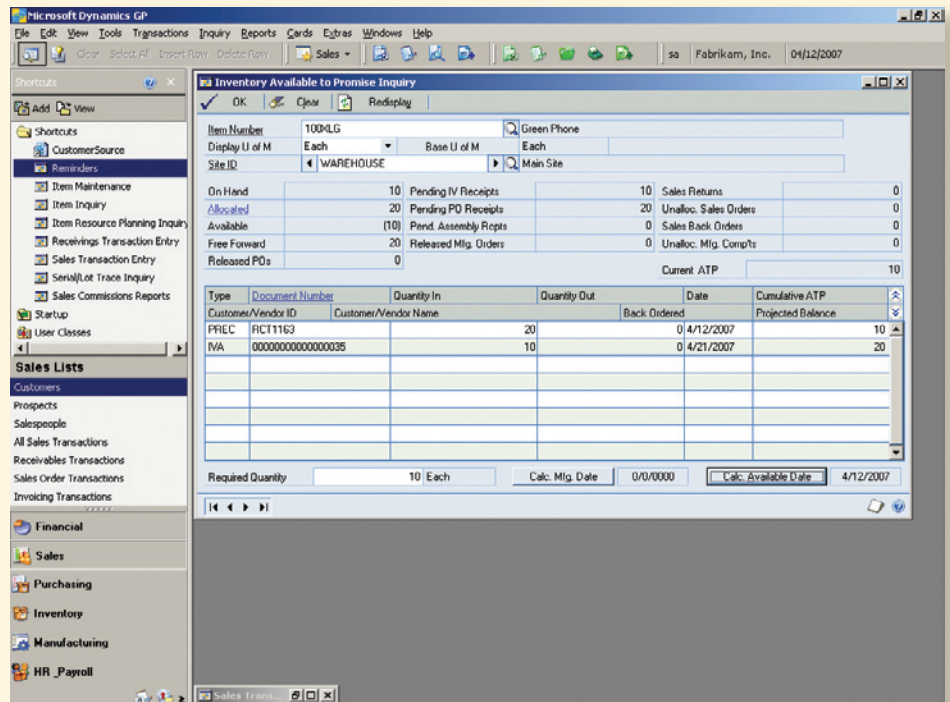
Avoid lost sales, backorders, dead inventory, and poor customer service with information that helps you make the most efficient and effective use of inventory and maximize your company's net profit.

See the future

Project how sales orders and deliveries are affected by delays and opportunities and revise inventory projections instantly, by drilling down to any transaction and making changes.

Empower your employees with the knowledge required to provide superior customer service. New inventory and order management capabilities help to keep information up-to-date about current and future quantities so you can ensure the right inventory is available at the right time, make and keep firm delivery promises, and boost profits.

MAXIMIZE YOUR NET PROFIT with information that helps you make the most efficient and effective use of inventory.



SERVE CUSTOMERS MORE EFFECTIVELY by quickly calculating the earliest date inventory can be delivered.

[FEATURES OVERVIEW]

Cumulative Availability to Promise (ATP)

Access forward-looking inventory projections that include outstanding sales and purchase orders, unposted inventory, bills of materials and manufacturing transactions, so accurate commitments to customers are made.

Calculate Earliest Ship Date

Quickly find the earliest date that a specific quantity of stock can be supplied to your customers while still meeting all existing commitments.

Complete Transaction Record

Automated system tracking through Bill of Materials, Sales Order Processing, Purchase Order Processing, Inventory Management in Microsoft Dynamics GP makes it easy to find every unposted transaction that will affect inventory.

Rolling Inventory Balance

Produce a running projected inventory balance with complete statistics on real and projected sales, as well as the sequence of anticipated delivery, to provide the most current information to your customers and employees.

Accurate Promise of Delivery

Show customers and employees the impact of promising immediate delivery if inventory appears to be committed, as well as project how sales orders will be affected if purchase receipts are delayed.

Product Summary

Make strategic inventory decisions with an easy-to-read summary of every possible inventory total related to the item, including future and provisional orders not yet allocated.

Drill Down and Update

Drill down to any transaction listed and see a revised inventory projection when you amend product quantities or delivery dates.

Full and Seamless Integration

Maintain and enhance your existing inventory database with a solution built on Microsoft® SQL Server™ technologies, designed to mesh seamlessly with Microsoft Dynamics® GP.

Visibility to ATP in Sales Transaction Entry

Access ATP information while completing sales orders, including:

- Access and view data from the Inventory Inquiry menu, and the Sales Transaction Entry, Sales Item Detail Entry, Sales Quantity Shortage Options, Sales Item Quantity Distribution Entry, Item Transaction Entry, Item Transfer Entry, and Item Lookup windows.
- Use new fields to get a more accurate view of ATP quantity data, such as quantity as of the user date.
- Update the Sales Order Processing window information with the sales line's Site ID and Requested Ship Date with data from the ATP window.