



Product Lifecycle Management

The first Product Lifecycle Management tool built entirely within Microsoft Dynamics® AX.

In today's fast-moving business environment, all businesses must capitalize on their key market differentiators and bring to market new products to maintain and build market share.

As companies become much tighter with their calendars, reducing cycle times, and looking at ways to lower the use of resources and materials, Product Lifecycle systems are now a critical part of the modern retailers business.

Do you need to eliminate manual processes and standalone email

Key functions include:

- **Activities** – Managing all activities including external supplier interactions
- **Critical Path Planning** – Tracking key milestones with Critical Path visibility and control, integration to Microsoft Outlook
- **Bill of Materials** – Drag and drop capabilities of components/trims/fabrics with Images which feed into the Technical Specifications (also available via web)
- **Technical specifications** – Provide suppliers with full technical specification's using efficient processing, add make instructions, show labels, measurements including grading.
- **Item Inquiry and Catalogue** – Full search of current catalogue and previous items including searching by contents of the Bill of Materials, generate catalogues on the fly
- **Templates** – Fast establishment of repeatable processes
- **Request for Quotes** – Exposed to the Enterprise Portal for easy supplier access and response in a consistent manner
- **Image Library** – Integration to CAD for accessing and storing images
- **Costing Sheet** – A comprehensive costing pricing sheet utilizing data from Microsoft Dynamics AX including cost build up from the Bill Of Material. Determine product feasibility reviewing margins, pricing and model costs

based communication and design specifications? Get all of your employees on the same platform using the same data with a SINGLE system eliminating department silos and forcing greater cooperation and collaboration with your staff and your key suppliers.

PLM is the first Product Lifecycle Management tool built entirely within Microsoft Dynamics AX for Consumer Goods & Apparel/ Textiles/Footwear - taking full advantage of the ERP (Enterprise Resource Planning) structures and functionality developed by Microsoft.

- **Item / SKU creation wizards** – Confirmed new items and ranges created automatically from wizards flowing from item approval
- **Supplier Ordering** - 100% integration with ordering allowing full specification and images to be included in supplier order confirmations
- **Measurements grading** – Garment grading

▼ Activity Milestones

Manage the critical path with this easy to view and filter form. Determine at a glance any bottlenecks or issues in the product lifecycle. Search for activities by role, employee, due date, by season/collection/theme/product group, etc.

Item number	Item name	Image	Scheduled end date
APP0005			
APP0006	Candy Apple Re...		30/06/2011

Activity	Description	Leadtime	Responsible	Scheduled start d...
10	Plan Range	1.00		23/07/2011
100	Submit ProdProduction ...	1.00		26/07/2011
20	Approve Range	1.00	1001	26/07/2011



Product Lifecycle Management for Microsoft Dynamics AX.

PLM delivers smart Product Lifecycle Management with integrated document and process management, centralized capture of design information, all WITHIN the supply chain solution.

We have taken the full Microsoft Dynamics AX ERP and AX for Retail solution and expanded this using the Microsoft Dynamics AX workflow and development tool set to deliver a SINGLE end to end OPEN solution in ONE database, with full security framework, and one toolset.

▼ Measurement Templates

Measurement templates can be set up to hold the measurements for a standard garment and tweaked to suit the individual item, automatic grading can be applied. Linking the measurements to the position.

Dev. code	Position Id	Description	Min. Tol.	Max. Tol.
C	Armhole	1/2 Hem circumference	1.00	1.00
A	Collar	Neck circumference (relaxed/buttoned)	1.00	1.00
D	CollarWidht	Collar width	0.50	0.50
T	NeckBase	CB neck to hem	1.00	1.00
N	PlcktLengt	Placket length	0.50	0.50
E	PlcktWidth	Placket width	0.50	0.50

Size Id	Measurement
L	43.50
M	39.50
S	37.50

▲ Item Inquiry

The item inquiry presents all the information required to make quick, simple decisions in a configurable format. The PLM solution has access to Sales, Purchase, On Hand matrix, and SKU pricing in a matrix. This form can generate catalogues for presentation on the web, emailed or printed and given to customers. Also available via Web portal.

Product Lifecycle Management is fully integrated and lives within:

- Microsoft Dynamics AX Inventory, where all of your SKUs, bill of materials, item characteristics and pricing is retained,
- Microsoft Dynamics AX trade agreements with full supplier costing history, terms and specifications,
- Microsoft Dynamics AX workflow connecting activities with full Microsoft Office and Outlook integration to track all activities from internal staff approvals to external suppliers sending samples and costings,
- Microsoft Dynamics AX Enterprise Portal to allow access for external partners including suppliers, for example, a Request for Quotation, uploading new specifications and for the design team to create PLM BOM's.

Activities, Workflow, and Critical Path Planning

- Build repeatable templates with pre-defined steps and time lines
 - Launch templates tuning desired timelines against agreed customer commitments
 - Automatically allocate tasks to teams, departments, individuals or suppliers
 - Track tasks and critical path bottle necks
- Link to an item, a dimension such as a new colour or size, or a purchase order for full flexibility.

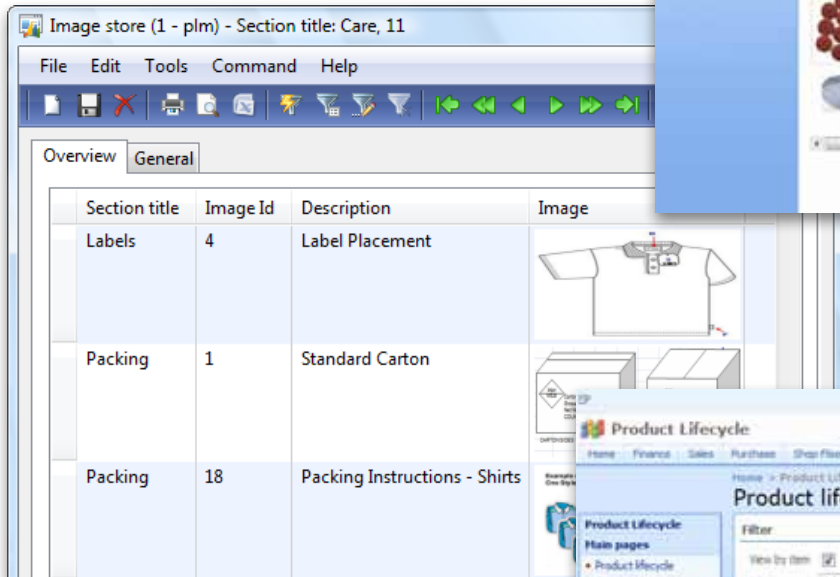


Image Library ▲

A library of images that can be reused in templates which are attached to products. It is also possible to swap an image with a new image and have all existing items be updated.

Remote Access Via Microsoft Dynamics AX Enterprise Portal ▶

Suppliers and other third parties can access PLM activities, action tasks, the latest Tech Pack and upload specifications and images.

The Enterprise Portal is also used to run Request for Quotations including supplier responses via the vendor portal.

Images and Template Library

- Standard Microsoft Dynamics AX document management to receive images internally and externally via the Enterprise Portal. Images linked or embedded
- Upload Templates for re-use, for example, Packing Instructions, Swing Tags, and Labelling
- Upload sizing specifications templates including automatic size grading
- Create Bill of Materials using a drag and drop designer, flexible filtering of components (Trims) allowing efficient and simple BOM creation.

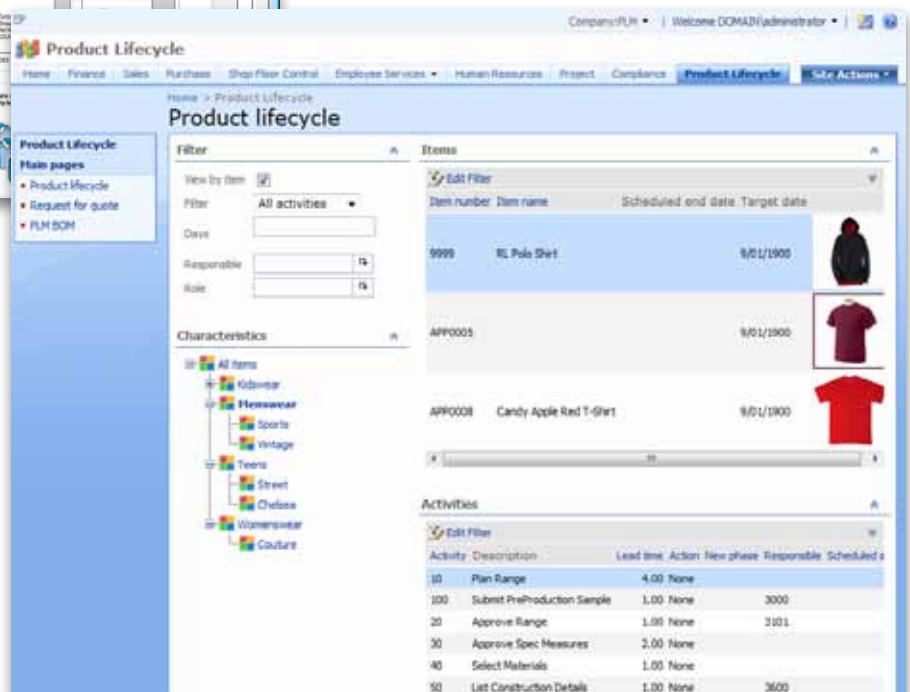
Supplier

- Ability to include third parties in activities and workflow
- Request for Quotes. Exposed to the Enterprise Portal for easy supplier access and response in a consistent manner
- Supplier Ordering. 100% integration of purchase with "Tech Pack" including supplier order.



▲ Templates Library

Activity (critical path) templates can be created via a drag and drop design builder



Item Inquiry and Costing Sheet

- Item Inquiry by any feature. Search for previous production, stock, fabric, etc.
- New Item Inquiry for Costing
- Profiles cost make up and supports modelling additional costs
- Profiles pricing options
- Project margins for a SKU item or a range
- Mass update options to change pricing.

Costing Sheet ▶

Replace complex, difficult to maintain spreadsheets with this comprehensive costing sheet to determine sales, retail and purchase prices. With inputs from sales quotations or RFQs a “deal” can be reviewed or feasibility of product can be attained.



Proven Benefits to PLM Customers

- Reduced time to market
- Introducing standard work practices
- Early elimination of non-profitable product development
- All product development data in just one place
- End-to-end visibility including sampling and sourcing
- Supplier performance rating
- Partner collaboration

About Collins Computing

Founded in 1986 and located in Orange County, California, Collins Computing is the largest Southern California Gold Certified Microsoft Dynamics partner. Collins Computing is the only Microsoft Dynamics partner to be named to the prestigious Microsoft Inner Circle for 14 years. Exclusively delivering Microsoft Dynamics ERP and Microsoft Dynamics CRM applications, we've implemented solutions for some of the largest and fastest-growing businesses.

Collins Computing is a reseller and implementer of Microsoft Dynamics GP, Microsoft Dynamics AX and Microsoft Dynamics CRM for companies worldwide with a focus in Orange County, San Diego, Los Angeles, Ventura and Riverside.

We invite you to find out more about our company, Microsoft Dynamics, and our implementation services for ERP and CRM. Then give us a call and discover how Collins Computing can help you realize your greatest business potential.



Corporate Headquarters

Collins Computing, Inc.
26050 Acero Street
Mission Viejo, CA 92691

(800) 943-9211
info@collinscomputing.com
www.collinscomputing.com

Count on Collins, Count on Success.